

Historic, Archive Document

Do not assume content reflects current scientific knowledge, policies, or practices.

62.42

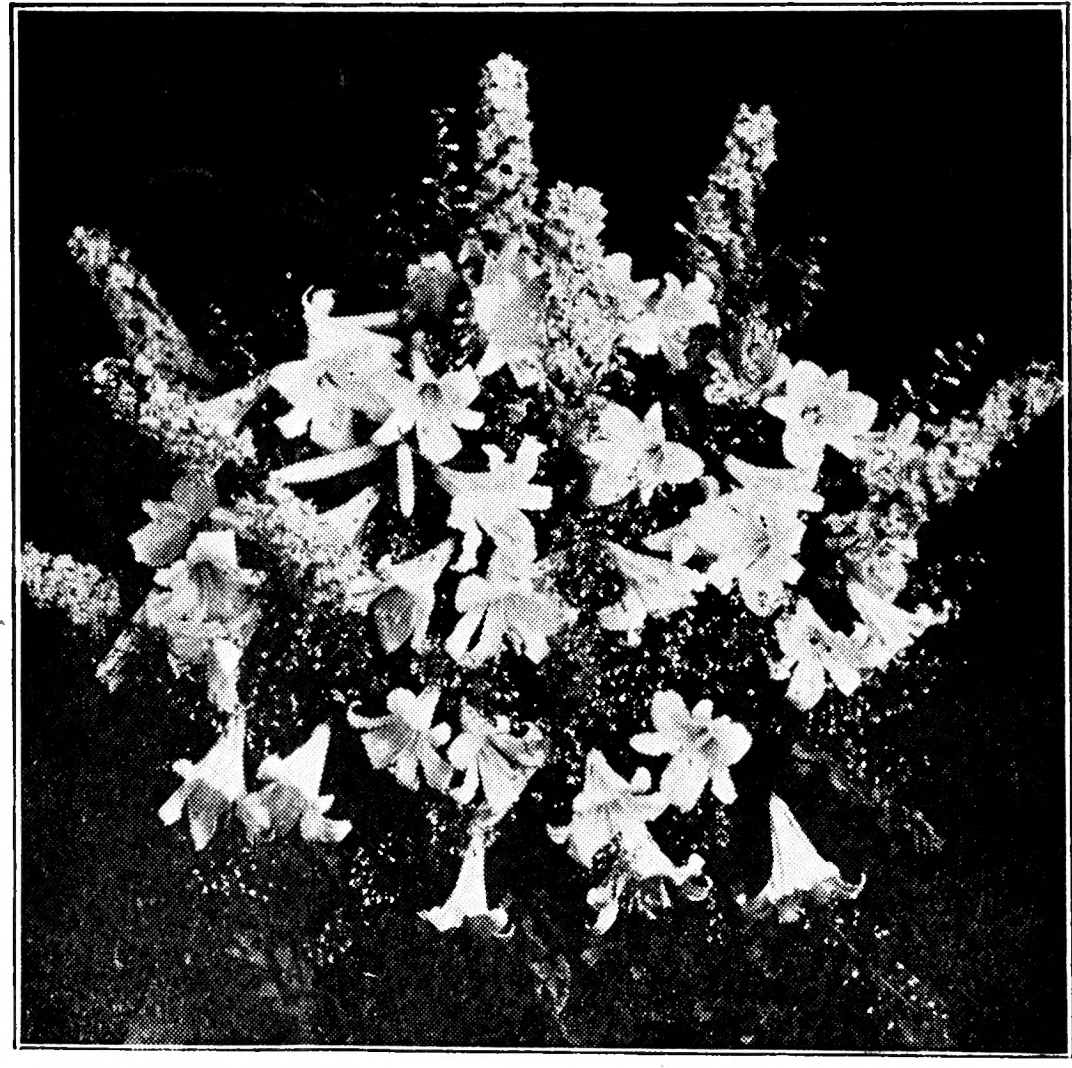
67070

LIBRARY
RECORDED
★ FEB 24 1910 ★
U. S. Department of Agriculture

Greater Values!

for _____

SPRING PLANTING



A Gold Medal Basket of Regal Lilies, Baby's Breath, and Delphinium

The LEHMAN GARDIENS
FARIBAULT, MINNESOTA

New Novelties and Plants . . .

Aster Constance

We consider this the finest dwarf Aster ever developed. Pure shell-pink flowers produced by the thousands completely covering the rounded plant in September. Height 10 to 12 inches. **Each 35c, 3 for.....\$1.00**

Aster Skylands Queen

New! The most outstanding of all blue flowered Asters. There is nothing that will compare with it. Imagine a hardy Aster with blue flowers 2½ inches in diameter produced by the hundreds on strong well proportioned stems. Height 3 to 4 feet. **Each 30c, 3 for 75c**

Buddleia Hartwegi

For a brilliant display of flowers all summer long no flower surpasses this marvelous new creation. From July until stopped by frost it produces those lovely bright lavender spikes in the greatest profusion. The spikes which are 12 to 15 inches long are in full bloom from base to tip at the same time. A single plant will attract hundreds of butterflies. Fragrance pleasing. Height 3 to 4 feet. **Each 30c, 3 for75c**

Campanula Blue Spire

Undoubtedly the finest double blue Peach Leaf Bellflower ever introduced. The two-foot stems grow very erect holding the large double flowers in a conspicuous manner. Very free flowering. Given room and good culture develops into a beautiful specimen. Strong field plants. **Each 35c, 3 for.....\$1.00**

Chrysanthemum Bronze Cushion

A counterpart of Pink Cushion and like it in every respect but color which is a glowing orange bronze. An exceptionally appropriate fall color. **Each 30c, 3 for 75c, 10 for....\$2.25**

Chrysanthemum King Midas

A most remarkable creation. The plants are a mass of fully double soft yellow flowers shaded slight bronze for a long period. Highly praised by all who have grown it. In full flower by late September. Height 2½ feet. **Each 30c, 3 for.....75c**

Gypsophila Bodgeri

The new double dwarf Baby's Breath. Indispensable for cutting as it begins flowering two weeks before Bristol Fairy and is continuous thereafter until fall. The very double flowers open pure white changing to blush-pink as they age. Charming for garden display and very useful for cutting. The plants we offer are established and growing in pots and are absolutely guaranteed to be double. **Each 35c, 3 for.....90c**

Page Two

Of Outstanding Merit

Hemerocallis Hyperion

We consider this the Model of Perfection in Daylilies. Received award of merit from Royal Horticulture Society. Enormous full spreading flowers of soft canary-yellow freely produced on 40-inch stems. Blooms throughout July. Very fragrant. If you want the best, don't hesitate to get Hyperion. **Each.....75c**

Pentstemon Grandiflorus

If you have never grown Pentstemon Grandiflorus you are missing a real worth while plant. Easily the largest and best of the entire family. Beautiful large soft lavender flowers on strong stems 2 to 2½ feet tall. Excellent for cutting. Striking blue foliage. Must be grown in full sun. **Each 20c, 3 for 50c, 8 for\$1.00**

Phlox Subulata Autumn Rose

A new variety of outstanding merits. The bronze foliage is completely covered with bright rose flowers in spring and again during the cool fall months. **Each 25c, 3 for 60c, 6 for\$1.00**

Shasta Daisy Supreme

A new Shasta Daisy that is the finest we have ever seen. It is unsurpassed in size, clearness of white, fullness of center, and substance of petalage. The immense pure glistening white daisies are produced on tall, strong, straight stems over the entire summer. Excellent landscape variety and ideal as a cut flower. We offer strong field grown plants that will bloom the entire summer. **Each 35c, 3 for.....\$1.00**

Shasta Daisy White Swan

A new early fully double Shasta Daisy. Begins to bloom in late May and continues all summer. It is so double that no center is visible. Excellent long stems. Fine for cutting. **Each 30c, 3 for.....75c**

One Each of the Dozen Novelty Plants

Listed on This Page for

\$3.00

Postpaid

Hardy Lilies

Concolor. Another Iron-clad hardy lily of easy culture and exquisite beauty. The bright glossy crimson star-shaped flowers unfold during late June and are a joy to behold. A dainty garden lily growing about 18 inches tall. **Each 20c, 6 for\$1.00**

Red Elegans. Large upright cup-shaped flowers of bright crimson orange with black dots. Very free blooming and effective in large masses. June blooming. Height 15 to 18 inches. **Each 15c, 3 for 40c, 10 for.....\$1.00**

Regal. The large, immaculate, pearly white trumpets flushed pink on the outside with a deep golden throat are the joy of the June and July garden. Exceedingly fragrant. It is very hardy, easy of culture, free flowering, and permanent. Does well in any soil or location. The bulbs we are offering are splendid, disease free, and winter hardy. No better bulbs are obtainable anywhere regardless of price. **Each 20c, 8 for \$1.00, 25 for.....\$2.00**

Speciosum Magnificum. This is a grand improvement on the variety Rubrum, being larger, more colorful, and more vigorous. The most outstanding of all fall blooming lilies. Plants grow from 2 to 3 feet tall and in August and September produce the gay colored fragrant flowers. Color is a carmine-pink spotted and margined white. An outstanding

cut flower, lasting ten days in water. Plant bulbs 6 to 8 inches deep. **Each 30c, 4 for \$1.00, 10 for.....\$2.25**

Tenuifolium. The absolutely indispensable hardy Siberian Coral Lily—a gem for the rock garden and border. The bulbs we are offering are extra select three year old bulbs. Each bulb will produce from ten to fifteen waxy fragrant scarlet flowers in June. **Each 15c, 10 for \$1.00, 25 for \$2.35, 50 for \$4.50**

Tigrinum Fortunei Giganteum. A much improved later flowering form of the Tiger Lily. When well established will grow 6 to 7 feet tall and carry as many as 40 to 50 flowers per stem. The color is a bright orange-salmon, spotted purple. Very desirable and easily grown. Plant bulbs 6 inches deep. Fine blooming size bulbs. **Each 25c, 3 for 60c, 10 for\$1.80**

Umbellatum. A very easily grown and hardy lily that produces many upright cup-shaped flowers of a lovely red during June. Flowers on stems 2 feet tall. We know of no lily that will increase faster, stand more abuse, and produce multitudes of showy flowers year after year for a lifetime than Umbellatum. As showy as the best Oriental Poppies. We are making this very special offer on strong blooming size bulbs only. **Each 20c, 3 for 50c, 8 for\$1.00**



Regal Lily

30 BELOW ZERO LILY COLLECTION

This collection is made up of the iron-clad varieties which have always withstood the ravages and bitter cold of our Minnesota winters in excellent shape. Includes a blooming range from June to September. Every one an easy variety for the beginner and absolutely hardy.

Fortuni .Giganteum	August
Regal	July
Tenuifolium	June
Umbellatum	June
Speciosum	August

1 Large Bulb of each.....	\$1.00
5 Large Bulbs of each.....	\$4.50
10 Large Bulbs of each.....	\$8.50

For a Blaze of Glory in the Fall Garden
Plant Lehmans'

Hardy Korean Chrysanthemums

The introduction of the Hardy Korean Hybrid Chrysanthemums has taken the flower lovers by storm. Truly no race of flowers has attained such popularity. All the varieties listed are perfectly hardy with reasonable winter protection, and will grow on from year to year paying tremendous dividends in showy fall flowers. All plants are strong and vigorous from 2½-inch pots and will make heavy blooming plants by fall.

We are not listing the following varieties: Apollo, Ceres, Daphne, Mars, Mercury, and Diana because the newer varieties are grand improvements over the older varieties.

Agnes Selkirk Clark. Single blossoms 3 inches across which shade from bronzy-pink to apricot and salmon. It is a vigorous growing variety producing abundant sprays of fragrant flowers which are in full boom in late September. **Each 25c, 3 for60c**

Astrid. Named for the Viking goddess of Love. The first absolutely fool-proof, winter-proof Chrysanthemum. Color is a beautiful soft pink shaded apricot with refined yellow center. Handsome habit with dark green glossy leaves in symmetrical tufts all summer. Can be grown in any perennial garden without winter protection because of its parentage from the Arctic Daisy of Alaska. The long stemmed flowers keep two weeks

**SPECIAL COLLECTION
OFFER**

Astrid
Agnes S. Clark
Indian Summer
Louise Schling
Psyche
Thalia

One Each of the 6 for
\$1.35
Postpaid

as cut flowers. The perennial supreme for the far North. **Each 35c, 3 for.....90c**

Ember. A remarkable hardy variety with excellently formed double flowers of a brilliant bronze made up of a combination of coral and orange shades. The blooms are of pleasing shape and 3 inches in diameter. In full bloom mid October. Height 2½ ft. **Each 30c, 3 for75c**

Indian Summer. Vivid, glowing orange that immediately captures attention. It is a large flower, 3 inches across but altogether attractive and distinct in form. Growth is distinct, erect, and sturdy, never requiring support of any kind. It fills the need perfectly for a late-flowering chrysanthemum that will not be marred or destroyed by late October frosts. Height 2 to 2½ feet. **Each 25c, 3 for.....60c**

King Midas. A most remarkable creation. The plants are a mass of fully double soft yellow flowers shaded slight bronze for a long period. Highly praised by all who have grown it. In full flower by late September. Height 2½ feet. **Each 30c, 3 for.....75c**

Louise Schling. The flowers are of good size, fully 3 inches across, with three or four rows of petals, fluffy and distinct in appearance. Glowing salmon-red in color, changing to a lovely soft-bronze-salmon as the flower matures. It is a remarkably free-flowering variety, healthy and attractive in its growth alone, and one of the first to flower. **Each 25c, 3 for60c**

**THE GREATEST VALUE OF THE
YEAR!!!**

**COLLECTION OF 5 NEW
HYBRID KOREAN
CHRYSANTHEMUMS**

Ember	Pink Lustre
King Midas	Romany
Nancy Copeland	

**One Sturdy Growing Plant of Each for
\$1.25
Postpaid
(\$1.40 Value)**

**3 Collections (15 Plants) for
\$3.00
Postpaid**

Nancy Copeland. The branching sprays of this variety are completely covered with large single flowers 3 to 4 inches across of a bright spectrum-red. This is one of the earliest of all Mums to bloom. Very distinct. Height 2½ ft. **Each 25c, 3 for60c**

Pink Lustre. Perhaps the freest flowering of the entire list. Hundreds of large single orchid-pink flowers on good strong stems. Flowers up to 4 inches across. One of the surest varieties to bloom as it begins in late September. Height 2½ ft. **Each 30c, 3 for.....75c**

Psyche. Imagine a billowy mound three feet or more across so completely covered with large delicate shell-pink flowers that the foliage isn't visible. Then you have a picture of this beautiful variety. The very large 4 to 5 inch single flowers are produced on long stems. Ideal for cutting. One of the most outstanding of the newer Korean "Mums". **Each 25c, 3 for60c**

Romany. Fully double blooms between carmine and Nopal-red, with bronze tones enhanced by the gold petal reverse appearing in the center. The cut flowers last for three weeks in water. Unusually hardy. Blooms in early October. Height 2½ ft. **Each 25c, 3 for60c**

Thalia. The graceful sprays of brilliant sparkling orange flowers make a gorgeous autumn color effect. It is tremendously free flowering and effective due to its splendid robust branching habit. Flowers are duplex, of excellent form and texture. **Each 25c, 3 for 60c**

The Moor. Brilliant amaranth-purple or portwine-red. Fully double flowers that are three inches across. Very hardy and free flowering. Excellent cut flower. Blooms in late September. Height 2 ft. **Each 35c, 3 for.....90c**

*For Hardy September Flowering
"Mums" See Page 20*



Browns Valley, Minn.

The plants arrived yesterday in good condition. Must say they are a very fine lot. I will be glad to recommend your firm to other flower lovers.

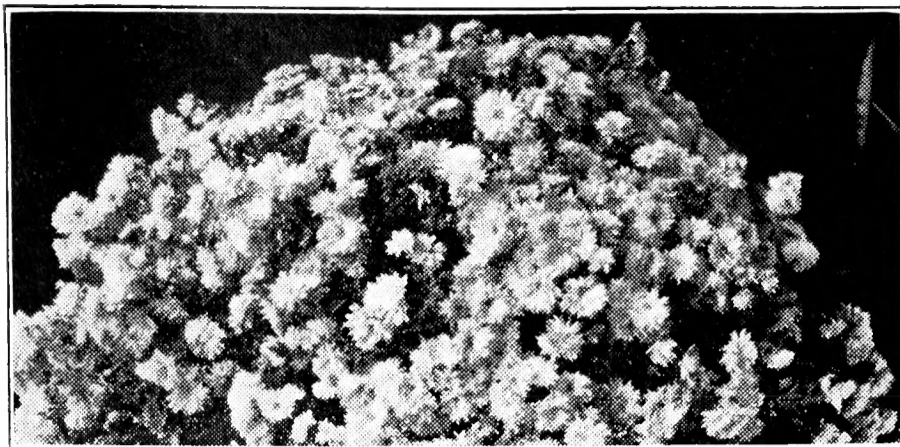
R. M. M.



Fallon, Nevada

The plants I ordered from you arrived today in fine condition. I have never received plants from any nursery so carefully packed or received nicer plants.

Mrs. S. M. F.



A Cushion "Mum" 3 Months After Planting

Hardy Cushion Chrysanthemums

Pink—Bronze—Red—White

(Also sold as Amelia, Blaze O-Mum and Azaleamum.)

Pink Cushion. The sensation of the Century of Progress. The plant is a dwarf, rounded compact mass of double rose pink flowers from late August to frost. Not unusual to count 500 to 600 flowers on a single plant. Hardy and easy to grow. Strong potted plants that will bloom heavily by August. **Each 25c, 3 for 60c, 10 for.....\$2.00**

Bronze Cushion. A counterpart of Pink Cushion and like it in every respect but color which is a glowing orange bronze. An exceptionally appropriate fall color. **Each 30c, 3 for 75c, 10 for.....\$2.25**

Red Cushion. This, like the pink variety, is very free flowering and brilliant in the garden. Flowers somewhat smaller and appearing a bit later but still makes a grand showing. In locations of very early frost dig and pot the plants either in bud or bloom and enjoy them in the house. Can be potted even when in full bloom. **Each 30c, 3 for 75c, 10 for\$2.25**

White Cushion. The very double white flowers completely cover the green cushion of foliage in fall. Very desirable. This is the earliest of all cushion Mums to bloom. The short sprays make grand cut flowers for centerpieces which last fully 10 days in water. **Each 30c, 3 for 75c, 10 for.....\$2.25**

SPECIAL OFFER

4 CUSHION CHRYSANTHEMUMS

**Pink, Red, White, and Bronze
for**

\$1.00

Postpaid

Hardy Phlox

Without the Hardy Phlox our perennial gardens would certainly be barren of bloom during July, August, and September. During their long season of bloom they overshadow all other perennials with their bright and brilliant colors. A well maintained garden of the newer varieties of Phlox is a picture not soon forgotten.

The Hardy Phlox isn't "fussy" as to soil or location and do splendidly in the hardy border. They are most effective in groups of three or more. To grow them at their best

give them rich soil, a cool location and plenty of water during the blooming season. They will tolerate considerable shade if the air drainage is good so as to avoid mildew.

Our fields presented a glorious sight last summer and all who saw them exclaimed of the marvelous health and vigor maintained. You can rest assured if you plant our Phlox plants you will receive the best that money can buy. We list only strong field grown plants.



Africa. Brilliant deep carmine with darker eye. Very large arched heads. Splendid strong grower. Very hardy. One of the best dark reds. Medium height. **Each 25c, 3 for...60c**

Apollo. Deep, rosy-purple shaded crimson. Immense globular heads carried on tall, straight stems. Very free flowering. **Each 25c, 3 for60c**

Athis. Clear salmon pink. Tall, slender stems hold flowers high above foliage. Use in back of border. **Each 20c, 3 for.....50c**

B. Compte. Rich satiny wine-red. A very striking dark shade. Splendid dwarf grower. Fine for edging or masses. **Each 20c, 3 for50c**

Champs Elysees. A dwarf compact growing variety with shapely heads of reddish purple bloom. Striking in its richness of coloring. **Each 20c, 3 for.....50c**

Chieftain. New! A tall graceful new red that is a real acquisition to the phlox list. Color almost a true crimson without a marking. A true even color. Much darker than Firebrand. **Each 35c, 3 for.....90c**

Colonial. A sturdy lilac lavender with large florets and immense spikes. Foliage very dark green with purple stems. **Each 20c, 3 for 50c**

Count Zeppelin. The purest white with dark vermilion red eye. An outstandingly good clean looking phlox. Tall grower. **Each 20c, 3 for50c**

Eclaireur. Large purplish-crimson with rays of light and white halo. Very sturdy and exceptionally hardy. Medium height. **Each 20c, 3 for50c**

E. I. Ferrington. A strong growing bright salmon-pink shaded rose. The coloring is very dainty and effective. **Each 20c, 3 for.....50c**

Miss Lingard. The everblooming, waxy pure white. In bloom from June to September. Very free flowering. **Each 25c, 3 for.....60c**



FAVORITE COLLECTION

These seven varieties of Phlox are cream of the tried and proven kinds that have stood the test of time. The color range is complete and each one a dependable and beautiful variety.

- Athis
- B. Compte
- Colonial
- Eclaireur
- R. P. Struthers
- Prime Minister
- Rheinlander

1 Field Grown Plant of Each

\$1.20

Postpaid

Fort Smith, Ark.

Let me thank you very much for the lovely Phlox plants received yesterday. I had hesitated in ordering from so far away from home thinking the plants would suffer in transit, but they were so fresh and fine and I have never seen such roots. Be sure that I shall tell my friends about you.

Mrs. E. B.

GLORIOUS PHLOX COLLECTION

A rare offering in high quality Phlox varieties. Every variety "tops" in its color class. Grow them in your garden and enjoy the best.

- Africa
- E. I. Ferrington
- Morgonrood
- Painted Lady
- Pink Beauty
- Prime Minister

6 Strong Field Grown Plants for

\$1.50

Postpaid

18 Plants (3 Each) for

\$3.75

Morgonrood. One of the newer phlox and outstanding in its pureness of coloring. An even deep rose with darker center. Very large florets and broad well rounded heads of bloom. **Each 30c, 3 for.....75c**

Mrs. Harding. An improved, clear salmon-pink. Trusses and florets very large. We consider this the best in its color. Medium height. **Each 25c, 3 for.....60c**

Painted Lady. Soft, silvery pink, cherry-red eye. A pleasing variety. We consider it one of the best in its color range| **Each 25c, 3 for60c**

Pink Beauty. The rose form of Miss Lingard. Also sold as Miss Verboom. A fine addition to the Phlox list. Color an even, deep lavender-rose. Very vigorous. Blooms from June to September. Tall grower. **Each 25c, 3 for60c**

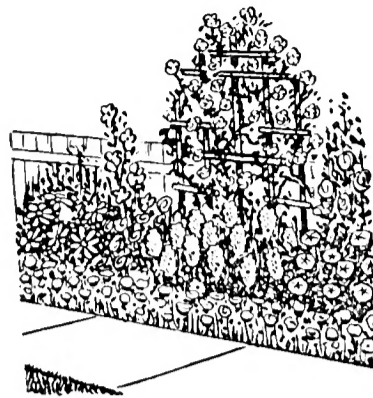
Prime Minister. Large branched heads of pure white flowers with a brilliant crimson center. Much superior to Europa or Bridesmaid. **Each 20c, 3 for.....50c**

Rheinlander. An old standard variety and still one of the best because of its robust constitution. Large heads of bright salmon-pink produced on strong stiff stems. **Each 20c, 3 for50c**

R. P. Struthers. Improved, large florets of a rosy-red overlaid with salmon. This is a more sturdy form of the original old stand-by. Tall. **Each 20c, 3 for.....50c**

Starlight. An unusual rich violet with clear white star center. The only Phlox of this color. Should be in every collection. **Each 25c, 3 for.....60c**

Wm. Kesselring. A sturdy growing rosy purple which is entirely distinct. A strong sturdy grower. **Each 25c, 3 for60c**



Attention!

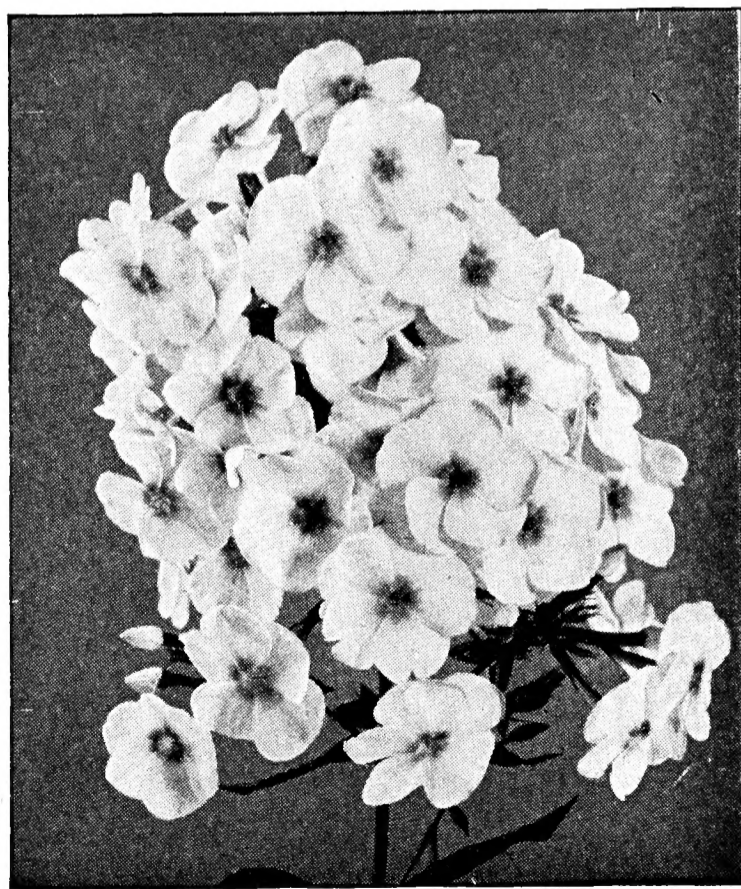
We pay the transportation charges on all orders of \$2.00 or over. On smaller orders kindly add 10% to cover postage.

If we do not have specific directions from you on how you want your order shipped, we use the method that we think the fastest and best in getting your order to you. If it is more convenient to receive your order by express than by parcel post kindly state this on your order.

Watertown, Conn.

The Phlox ordered from you came in fine shape. The plants were packed in a wonderful way. I think we never found plants in better shape.

C. E. L.



Hardy Phlox

Phlox Subulata

(Creeping Phlox)

Invaluable plants for the rockery and border with their pretty, moss-like evergreen foliage that during April and May is hidden by an avalanche of blossoms in white, pink, rose, lilac and purple. All varieties of Phlox Subulata should be grown in a dry location with full sunlight. A few of each color should be in every garden. Excellent for edging purposes. Our list comprises all the better vari-

eties from both American and European growers. We feel we have the largest, and most complete collection of Phlox Subulata in the country.

Our prices are for strong well rooted field grown plants. Each plant will produce hundreds of flowers in April and May if planted this spring.



Alba. The pure white flowers completely cover the compact plants in May. **Each 20c, 3 for 50c**

Apple Blossom. One of the newest varieties with neat compact foliage which is completely covered with bright apple blossom pink flowers with showy purple eye. A fast grower and the earliest to bloom. **Each 25c, 3 for 60c**

Atropurpurea. New! A splendid novelty. A vivid carpet of deep wine-red flowers completely covering the bronze foliage in May and June. Habit of growth excellent. Very free flowering. Plant in masses for a gorgeous sight. **Each 25c, 3 for 60c, 6 for \$1.00**

Autumn Rose. A new variety of outstanding merits. The bronze foliage is completely covered with bright rose flowers in spring and again during the cool fall months. **Each 25c, 3 for 60c, 6 for \$1.00**

Brightness. An outstanding color. A bright rosy-lavender pink with large crimson center. Very large flower. A fast grower and excellent for massing. **Each 30c, 3 for 75c**

Blue Hill. New! The closest approach to a blue creeping Phlox Subulata. A vigorous and worthwhile acquisition. Petals twisted giving bloom Hyacinth effect. **Each 25c, 3 for 60c**

Emerald Cushion. Very New! Distinct bright emerald colored foliage. Very large flowers of an outstanding deep rose. No other variety can approach it for richness of color. **Each 50c, 3 for \$1.25**

Fairy. A pale blue with dark purple eye. Slow growing and neat in habit. A fine rock plant. **Each 20c, 3 for 50c**

Leuchtstern. Another fine European variety with large full petals opening rosy-pink and changing to lilac. A very neat and compact plant. Does not spread rapidly. **Each 35c, 3 for \$1.00**

Lilakonigin. New! A promising new European variety that is far superior to Lilacina. Small compact deep green moss-like foliage and deep lilac flowers. **Each 30c, 3 for 75c**



\$1.35

Will bring you these marvelous Phlox Subulata to make your garden a living picture of beauty.

- Apple Blossom
- Atropurpurea
- Autumn Rose
- Blue Hill
- Brightness
- Rochester

If it's spring color you want it's Phlox Subulata you need.



Phlox Subulata

Lilacina. A robust creeping variety fine for bold masses in the rockery or border. Rose magenta flowers in May. Evergreen foliage—pretty in winter. **Each 20c, 3 for.....50c**

Maeschnee (May Snow). A much improved alba with better flowers and a neater plant. Thousands of pure white flowers completely cover the green mats of foliage in April and May. **Each 30c, 3 for.....75c**

Moerheimi. A fine carmine-pink variety producing large flowers on a mass of light green foliage. **Each 25c, 3 for.....60c**

Morning Star. A different and distinct variety with lilac flowers. Center star bluish purple. **Each 25c, 3 for.....60c**

Rochester. A brilliant deep-rose of outstanding beauty. A vigorous grower forming clear

compact mounds which are completely hidden with flowers in May. **Each 30c, 3 for 75c**

Ronsdorf Beauty. New! The sensational new European shell pink with very large overlapping petals of grand substance. Exceptionally large flowers cover the plants making a brilliant display. We consider this variety the tops of all Phlox Subulata. Strong field plants. **Each 50c, 3 for.....\$1.25**

Sampson. Very large full petaled flowers of an even deep rose. Mass effect rosy red. A very fast growing variety. **Each 35c, 3 for 90c**

Schneewitchen (Snow White). This could be called the "Baby Breath" Phlox Subulata as the tiny white flowers are very small but are produced by the thousands. Blooms about two weeks later than the other varieties. Entirely distinct from any other variety. **Each35c**



Gladiolus

Bleeding Heart. Combination of white and light pink with large red blotch. Fine spike with 8 to 10 flowers open. **Each 7c, 3 for 15c**

Betty Nuthall. Coral pink with tint of orange lighter toward center. Splendid long spike with 8 to 10 medium large flowers open. **Each 5c, 3 for.....12c**

Dr. Bennett. A large fiery scarlet. Has been the leading red in its color class a long time. **Each 5c, 3 for12c**

Debonair. La France pink shading to shrimp pink with creamy throat. Fine long spike with 6 to 8 large flowers open. Very good grower. **Each 7c, 3 for18c**

Duna. Soft pink buff shading to pale yellow at base. An outstanding variety. 6 to 9 flowers open. **Each 6c, 3 for15c**

Edith Robson. Light salmon-rose with red throat. Very vigorous variety with 10-12 flowers open. **Each 6c, 3 for.....15c**

Golden Cup. A large deep yellow. Much better than Golden Dream. 6 to 8 flowers open. **Each 6c, 3 for15c**

King Arthur. Immense ruffled rosy-lavender. A striking variety that draws attention immediately. 5 to 6 large flowers open. One of the very best. **Each 7c, 3 for.....18c**

Maid of Orleans. One of Pfitzers best. Milky white with cream throat. Tall, strong spike with 8 or more flowers open. **Each 7c, 3 for18c**

Pelegrina. The nearest dark blue Glad to date. Six or more flowers open with the remaining ones showing color. A fine variety. **Each 6c, 3 for.....15c**

Picardy. Mammoth soft clear shrimp pink. By many considered the finest Glad ever introduced. Immense flower 6 inches across. 8 to 10 flowers open. Very vigorous. **Each 6c, 3 for15c**

Rapture. Medium light salmon with creamy yellow blotch. A fine strong grower, 6 to 7 large flowers open. **Each 6c, 3 for.....15c**

Wasaga. Beautiful clear glowing buff with ruffled blooms. A masterpiece for cut flowers and design work. **Each 6c, 3 for.....15c**

Wurtembergia. Immense fiery scarlet with cream white throat. Grows very tall and straight. One of the most brilliant bright reds. **Each 6c, 3 for.....15c**

GLORY COLLECTION

This collection is made up of all named varieties and includes all those listed on this page but unlabelled. A grand assortment of showy prize-winning Glads at a very low cost. All large size bulbs (1 inch or up in diameter). The best Glad bargain of the year.

10 Large Bulbs.....\$.50
 25 Large Bulbs.....\$1.00
 50 Large Bulbs.....\$1.75

Prepaid

SPECIAL OFFER

Three Each of the Above 14 Varieties
 Labelled for

\$1.50

Postpaid

Hemerocallis *The Golden Day Lilies*

The Hemerocallis is becoming very popular for garden planting. They possess the characteristics of perfect perennials. They are perfectly hardy, easy of culture, free blooming, colorful, and have no insect enemies or diseases. Most varieties have a very pleasing fragrance. They can be planted in either spring, summer, or fall. By planting our strong, sturdy plants in spring you can be assured of abundant bloom this summer. They will tol-

erate almost endless neglect, poor soil, and locations, but to have them at their best give them rich soil and do not let them suffer for want of water during dry periods. When planting give them about two feet of space to develop in.

By selecting the different varieties one may have Day Lilies in bloom from May to early September in colors from pale yellow to gold, apricot to orange to almost red.



Bay State. A strong growing and free flowering variety at its best in late June. Large brilliant deep yellow flowers with fluted petals produced on 4-foot stems. One of the best. **Each**75c

Calypso. Originated by Luther Burbank. An evening blooming type, rather large, clear lemon-yellow. Flowering scapes held stiffly erect. Flowers open about sunset and stay open only during the night and early morning. Will open on cool and cloudy days. **Each**75c

Citrina. A very fragrant, night blooming pale lemon-yellow. Has an excellent and robust habit of growth and an abundance of dark green foliage. Very free flowering. July blooming. Height 3½ feet. **Each**.....50c

D. D. Wyman. Large, spreading flowers up to 6 inches across of a deep, rich golden-yellow with a splash of tawny red on each petal. Height 3 feet. July and August blooming. **Each**\$1.00

Dr. Regal. Very fragrant bright yellow. Exceptionally free flowering. May blooming. Height 1½ feet. **Each**35c

Flava Major. Very free flowering soft canary-yellow. Tall and graceful. July and August blooming. Height 3½ feet. **Each**.....35c

Golden Dream. Perhaps the best of all Mr. Betscher's hybrids. Large, full, deep-orange flowers freely produced in late July. Very vigorous. Height 3 feet. **Each**.....\$1.25

Goldeni. A most effective garden variety of a deep golden-orange. Outstandingly good. Height 3 feet. July blooming. **Each**.....\$1.00

George Yeld. Large, open flowers of the richest orange, shaded scarlet. Strong erect stems carry the many blossoms at 3 to 3½ feet. July and August blooming. **Each**.....\$1.50

Gold Dust. Brilliant, glowing, golden-orange of finest form. One of the best early flowering day lilies producing multitudes of exquisite flowers during May and June. Plant habits very trim. Exceptionally showy. Height 2 feet. **Each**50c



Hempstead, N. Y.

Plant order received today. Delighted with REAL plants—not sample size as some nurseries send.

Mrs. Wm. C. F.



Washington, D. C.

About two years ago I received a collection of Hemerocallis from you which were the nicest plants I have ever bought. They are the nicest thing in my garden.

Mrs. M. C. K.

GOLDEN OPPORTUNITY COLLECTION

Do not pass up the opportunity to acquire this glorious array of Day Lilies for your garden at such a tremendous saving. Truly a representative group. Every one a gem for the beginner. All different. Correctly labeled and real quality field grown plants. All will bloom this season.

- Bay State
- Citrina
- Gold Dust
- Margaret Perry
- Mrs. J. A. Crawford
- Mrs. W. H. Wyman
- Sovereign
- The Gem

One each of the 8 varieties for

\$3.00

Postpaid

ELITE COLLECTION

Make your own selection at a saving of these newer outstanding Hemerocallis. They will delight you.

D. D. Wyman
George Yeld
Golden Dream
Hyperion
Margaret Perry
Mikado
Ophir

You may select any 3 for

\$2.50

All 7 for

\$5.00

(A \$7.75 Value)

Hyperion. We consider this the Model of Perfection in Daylilies. Received award of merit from Royal Horticulture Society. Enormous full spreading flowers of soft canary-yellow freely produced on 40-inch stems. Blooms throughout July. Very fragrant. If you want the best, don't hesitate to get Hyperion. Each75c

Kwanso Flora-Pleno. The only double Daylily. Much used for naturalizing at summer homes and for cemetery planting. Color a rich bronze shaded with gold. Very hardy, will thrive where few other plants would survive. Each 25c, 10 for \$2.00, 100 for \$12.00

Margaret Perry. A unique combination of colors. Orange with cadmium yellow throat and stripe down center of each petal. Very vigorous and well branched which extends blooming period almost a month. July and August blooming. Height 4 feet. Each \$1.00

Mikado. A charming flower showing a bold contrast of colors. Ground color a deep rich orange with a bright Mahogany spot in center of each petal. Very showy. July blooming. Height 3 to 4 ft. Each.....\$1.25

Mrs. J. A. Crawford. A sparkling combination of apricot and yellow to brighten the June and July garden. Height 4 feet. Each75c

Mrs. W. H. Wyman. One of the latest blooming day lilies in the list. Tall, strong, with flowers on stems 4 feet tall. Color a lively light-yellow. Flowers full with good substance. In bloom about August 1. Each\$1.00

Ophir. One of the finest of all day lilies. The only American day lily ever to receive an



award of merit from the Royal Horticultural Society. Flowers large spreading trumpet shaped orange-yellow. July blooming height 4 ft. Each.....\$1.00

Orange King. A fine, even, deep orange. Excellent texture and pleasing form. Each 50c

Sovereign. Medium sized, chrome-yellow flowers in late June. A refined variety. Height 2½ feet. Each50c

The Gem. A deep yellow of fine substance. Excellent form, equal to the best lilies. Height 3 feet. July blooming. Each.....75c

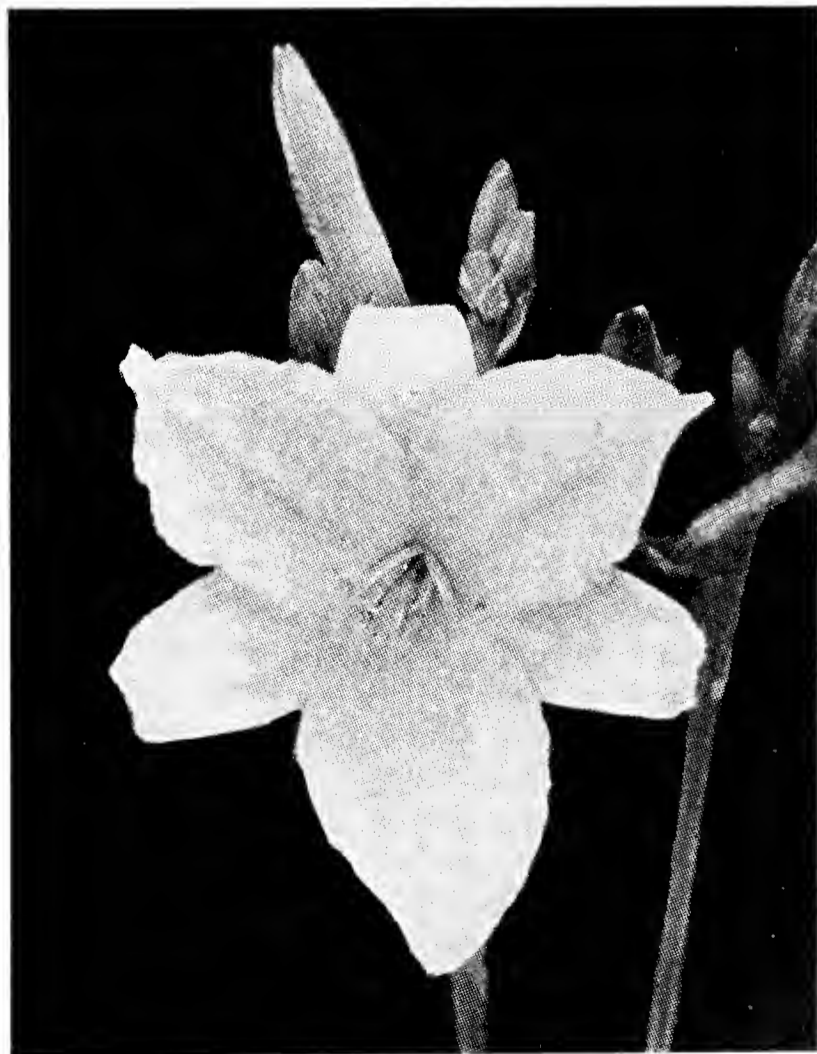
Thunbergi. An evening blooming pale yellow. Very fragrant. July and August blooming. Height 3 feet. Each.....35c



Park City, Mont.

The Hemerocallis I got last year bloomed and have lived over a 50 below zero winter. Are coming up nicely. Your Regal Lilies were the best I had—every one bloomed.

Mrs. J. B.



The Gem

Hardy Asters

The Hardy Aster or Michaelmas Daisies make such a lavish display of bloom in September and October that they are considered indispensable to the hardy border. Their ease of culture, freedom from insects and disease, and their perfect hardiness make them ideal border plants. We are listing varieties which

we have chosen from many hundreds as representing the cream of the crop. Every variety desirable and worth while.

In order to keep Hardy Asters blooming freely divide and replant every spring and you will be rewarded with thousands of flowers on neat plants.



Amethyst. New! Perhaps the most double form of all hardy asters. The large blue flowers deeply shaded purple are lavishly produced on strong well proportioned plants. Height 3 feet. Each 30c, 3 for75c

Barr's Pink. A very strong growing Aster often reaching 4 to 5 feet. Flowers are large of excellent substance and a pure bright pink. A showy variety for the back of the border. Each 30c, 3 for.....75c

Blue Gem. Considered the best double all blue aster in cultivation. Color, a deep striking blue. Flowers 1½ inches across. Excellent for mass effect. Height 3 ft. Each 25c, 3 for60c

Constance. We consider this the finest dwarf Aster ever developed. Pure shell-pink flowers produced by the thousands completely covering the rounded plant in Sept. Height 10 to 12 inches. Each 35c, 3 for.....\$1.00

Dazzler. New! The introduction of this new reddish-rose flowered variety gives us an entirely new color to Asters. Strong growth in distinct pyramid fashion. A distinct improvement over existing types. Each 35c, 3 for 90c

Joan Vaughen. Early blooming and very free flowering. Color a soft lilac-blue. Very heavy bloomer. Height 3 to 4 feet. Each 20c, 3 for50c

King of Belgians. A medium growing variety with large single flowers 1½ inches in diameter of a lobelia-blue in profusion. Height 2 to 3 feet. Each 20c, 3 for.....50c

**COLLECTION OF
DWARF ASTERS**

Constance	Ronald
Mme. Carroy	Victor

One Sturdy Growing Plant of Each for
\$1.00

Three Sturdy Growing Plants of Each
for
\$2.50

Mme. Carroy. This is the most outstanding dwarf Aster introduced so far. Plants grow in a distinct dome shape with high center. The whole mass is smothered with a shower of good sized medium blue flowers. Is unexcelled for mass effect. If you try but one Aster let it be Mme. Carroy. Each 35c, 3 for\$1.00

Queen Mary. A charming large flowered variety. The large flowers are produced on strong well proportioned plants. Color pleasing rosy-lavender with a decided pink cast. A very showy variety. Height 3 ft. Each 25c, 3 for60c

Red Rover. The first good red Aster. Color a bright rosy-red with yellow center. Plant habits excellent. A Must Have. Height 30 inches. Each 30c, 3 for.....75c

Ronald. The rose-pink buds opening to clear lilac-pink completely hide the foliage during mid September. Height 12 inches. Each 25c, 3 for60c

Skylands Queen. New! The most outstanding of all blue flowered Asters. There is nothing that will compare with it. Imagine a hardy Aster with blue flowers 2½ inches in diameter produced by the hundreds on strong well proportioned stems. Height 3 to 4 feet. Each 30c, 3 for75c

Snowdrift. Excellent early white. Semi-double with prominent yellow center which turns to purple as flower ages. The best early white. Height 3 feet. Each 25c, 3 for.....60c

**THE 4
ARISTOCRATS**

Constance	Skylands Queen
Red Rover	Sunset

One Sturdy Plant of Each for
\$1.00

Postpaid
Three Each for
\$2.50

St. Egwin. A row of this variety makes a dense hedge of bright rose-pink during September. Plants often completely covered by flowers. Very free flowering. Height 2 feet. **Each 25c, 3 for60c**

Sunset. A glorious new pink Aster producing a lavish display of thousands of bright pink flowers in September. Compact plants. Excellent landscape variety. Don't Miss This One. Height 2 feet. **Each 30c, 3 for.....75c**

Victor. The dwarf round cushion like plants are completely covered with lavender-blue flowers in August and September. The earliest dwarf Aster. Fine for bordering and rock work. Height 10 to 12 inches. **Each 25c, 3 for60c**

White Lady. Good sized semi-double pure white flower produced by the thousands on lateral branches from the ground to the tip. A well flowered plant of this variety is a breath-taking picture in white. Height 2½ to 3 feet. **Each 25c, 3 for.....60c**

All Color Aster Collection	
Red Rover	White Lady
Skylands Queen	John Vaughan
Sunset	Royal Blue
A Sturdy Plant of Each for \$1.50 Postpaid	

Hybrid Lilacs

These three varieties of hybrid Lilacs we are offering this spring are distinct colors and each one a reliable and worthwhile kind. All are grown on their own roots.

We suggest that you place your order for Lilacs early. All orders for Lilacs received after April 15th will be booked for fall delivery.

Mme. Lemoine. A grand double pure white Lilac. A strong grower and very free flowering. This variety has a very pronounced characteristic Lilac fragrance. 2-3 ft. plants. **Each75c**

Senator Volland. A very warm and pleasing blend of Rose and Lilac giving it a pink effect. This double variety will probably outdo all others in freedom of flowering. 2-3 ft. plants. **Each75c**

Victor Lemoine. One of the most beautiful double Lilacs in existence. Plant extremely vigorous and free flowering. Individual florets and spikes very large. Color a delicate near light blue. 2-3 ft. plants. **Each.....\$1.50**
One Each of the 3 Varieties for \$2.50

Buddleia (Butterfly Bush)

Since the introduction of the new improved varieties Buddleias have become one of the most popular of all summer flowering plants. In reality they are perennial shrubs but most often treated as herbaceous perennials. In the far North they must be carefully protected or wintered inside. We offer thrifty growing plants from pots that are guaranteed to bloom freely this summer.

Charming. The new pink flowering butterfly bush. Truly a glorious new creation. In full bloom from July to frost producing those graceful spikes of pink 12 inches long. A superb cut flower because when used with other flowers its color blends so beautifully. Grows into a well rounded plant to 4 feet tall. **Each 35c, 3 for\$1.00**

Hartwegi. For a brilliant display of flowers all summer long no flower surpasses this marvelous new creation. From July until stopped by frost it produces those lovely bright lavender spikes in the greatest profusion. The spikes which are 12 to 15 inches long are in full bloom from base to tip at the same time. A single plant will attract hundreds of butterflies. Fragrance pleasing. Height 3 to 4 feet. **Each 30c, 3 for.....75c**



Buddleia (Butterfly Bush)

Bittersweet. One of our best known native vines. The clusters of orange-red berries are popular for winter decorations. It is very hardy, grows almost anywhere, and requires no particular soil or location. In summer the plants are a mass of beautiful foliage and in June it has clusters of small pale-yellow flowers. In autumn it reaches its full beauty when it is covered with clusters of beautiful orange colored berries which are retained all winter. Fine vine for the porch trellis or for covering an ugly post or tree. Strong 3-year-old plants. **Each 35c, 4 for.....\$1.00**

Select Hardy Perennial Plants!

The paramount reason for our success in shipping plants safely to all parts of this country, Canada, and Alaska, is due to intelligent care and handling. Every plant order is dug fresh from the field, packed for shipping and on its way to you within a few hours after being dug. This preserves vitality. You do not receive dried and shriveled plants from us. In our estimation, plants from storage are worthless. We do not handle them.

Try our plants and be convinced of their superior quality. Try to have the ground prepared and ready for planting before the plants arrive. Upon receipt of your order of plants try to plant them as soon as possible. You will be rewarded with much finer flowers and many more of them if you cut the exposure to a minimum while the plants are out of the ground.



Achillea The Pearl

Achillea (The Pearl). An easily grown and permanent perennial for the border. Pure white double flowers on plants 18 inches tall all summer. Good for cutting. Each 20c, 3 for50c

Arabis Kellersi. This dainty miniature Rock Cress is something entirely different. The tiny rosette-like clumps cling close to the ground from which the small white flowers appear on 2-inch stems. Each.....25c

Alpine Aster. A very satisfactory and easily grown perennial for the rock garden or front of border. Multitudes of rose-purple daisies with orange center in May and June. Excellent for cutting. Heights 8 to 10 inches. Each 20c, 3 for 50c, 8 for.....\$1.00

Asclepias Tuberosa (Butterfly Flower). One of the most brilliantly colored of American natives. Large umbels of glowing orange with trace of bright yellow and scarlet. Its vivid color blends well with other border flowers. An excellent cut flower. Strong 3-year plants. Each 25c, 3 for.....60c

Ajuga Reptans. Masses of glossy, dark green foliage throughout the summer. Dark blue flowers in June and July. Indispensable for a

quick ground cover in bare spots. Prefers partial shade but does well in sun if given fairly rich soil. Height 3 to 4 inches. Each 15c, 3 for 40c, 10 for\$1.00

Campanula Alliariaefolia. A vigorous and handsome bellflower particularly recommended for the hardy perennial border. A vast number of white pendant bells sway on many stems arranged in vase fashion. Height 3 ft. Each 20c, 3 for 50c, 7 for.....\$1.00

Campanula Trachelium (Coventry Bells). This grand bellflower produces its graceful spire-like stems with pendant bells in July and August. Color a light purple. An enduring perennial. Height 3 ft. Each 20c, 3 for 50c, 7 for\$1.00

Campanula Turbinata. One of the prettiest blue flowering plants for edging borders or the rockery. Foliage bright in compact mats from which spring the many large bell shaped flowers from June to October. Color from light lavender to deep purple. Height 6 inches. In constant bloom all summer. Very hardy. Each 15c, 3 for40c



Campanula Persicifolia

(Peach Leaf Bellflower)

Of all the perennial bellflowers this one stands out as being by far the best of the entire family. It is perfectly hardy, easy of culture, and blooms with such profusion year after year that to be without it is a loss indeed. The long three foot spikes make grand cut flowers during July and August. The following varieties are the best introductions to date.

Grandiflora. A grand type for garden planting and cutting. The stiff 3 foot stems are freely produced. Color from white to shades of medium blue. A bargain at these prices. Each 20c, 3 for 50c, 7 for.....\$1.00

Blue Spire. Undoubtedly the finest double blue Peach Leaf Bellflower ever introduced. The two-foot stems grow very erect holding the large double flowers in a conspicuous manner. Very free flowering. Given room

and good culture develops into a beautiful specimen. Strong field plants. Each 35c, 3 for\$1.00

Telham Beauty. This fine giant single Peach-bell is considered the largest variety known to date. Strong stately stems to three feet carrying the giant saucer shaped blue flowers in July. Each 25c, 5 for.....\$1.00

❖ ❖

Columbine

Columbine Dobbie's Imperial Hybrids. Unquestionably the world's finest strain of long spurred Columbine because of their magnificent range of colors and sturdiness. Colors range from the deepest blues to lilac and heliotrope and from bright scarlet to pastel shades of pink. No other strain will approach it in richness of color. The plants we are offering are heavy two-year-old plants. The roots are filled with vigor and vitality ready to glorify your garden with their magnificent show in June. We cannot supply separate colors. Each 20c, 7 for\$1.00

Columbine Crimson Star. Unquestionably the world's finest long-spurred red Columbine. Sepals and spurs deep blood crimson with center of white petals glorified by yellow stamens. A sensation for sturdiness and free flowering qualities. Very easily grown. Each 25c, 5 for \$1.00, 10 for.....\$1.85

Columbine Clematiflora. The beautiful new Clematis flowered Columbine. The huge spurless flowers come in rich pastel shades. A choice European Novelty of 1938. Strong year-old plants. Each 30c, 3 for.....85c

Columbine Sibirica. This Columbine from the frozen North of Siberia has vigor and hardiness not found in any other strain. Single plants become very large clumps producing their big flowers, often double, in extravagant profusion year after year. Color from rosy amethyst to black violet. Each 20c, 3 for 40c, 8 for.....\$1.00



Columbine Crimson Star



Coreopsis Sunburst

Alpine Columbine. A long lived short spurred Columbine that is very attractive in the wild garden or border. Very sturdy and producing hundreds of flowers year after year. Plants become large clumps. Color deep purple. A rare bargain. Each 15c, 3 for 40c, 8 for\$1.00

Coreopsis Sunburst. A new double golden-yellow form that is different. Attracts a great deal of attention. Excellent for cutting purposes and if old flowers are removed will continue to bloom all summer. Each 20c, 3 for 50c, 8 for\$1.00

Coreopsis (Perry's Variety). A new variety from England. Taller and more vigorous than the type with longer and firmer stems and much larger blooms. Flowers beautifully formed and a fine golden-yellow color. Excellent cut flowers all summer long. Extra large two-year-old plants. Each 20c, 3 for 50c, 8 for\$1.00

Coralbell Pluie de Feu. An outstanding new bright red Coralbell which continues to bloom all summer. Outstandingly superior to old varieties. When well established and in bloom gives the impression of a fountain of fire. A splendid cut flower. Each 30c, 4 for \$1.00

Cerastium Tomentosum (Snow-in-Summer). Use in bold masses in rock garden or rock wall in ordinary soil in full sun. Low growing perennial with beautiful silvery white foliage covered with snow white flowers in May. Also useful for bordering the perennial garden. Each 20c, 3 for 50c, 10 for.....\$1.50

Campanula Medium (Canterbury Bells). The most popular biennial in cultivation. Plants grow to 2 feet in height and during early summer are covered with large bell shaped flowers.

Rose. A most pleasing shade of rose-pink. Extremely showy. Strong field plants. Each 20c, 3 for50c

Blue. The large blue bells completely cover the entire plant. Each 20c, 3 for.....50c

Chrysanthemum Arcticum. A late fall daisy from the far North. Foliage bright glossy green in neat compact tufts all summer. The 2-2½ inch white daisies begin to appear by mid September. A fine late fall flower. Each 25c, 3 for60c

Chrysanthemum Coreanum. The original parent of the popular Korean Chrysanthemums Hybrids. Of ironclad hardiness and distinctly beautiful in late fall. The white daisies shaded pearl-pink are produced in graceful sprays from late September on. Grand cut flower. Height 2½ feet. Strong field plants. Each 25c, 3 for 60c, 10 for.....\$1.50

Chrysanthemum Uliginosum (Giant Fall Daisy). One of the most striking fall blooming perennials. Covered in September with many white daisy-like flowers 2 inches across. A giant among daisies. Height 4 feet. A grand border plant. Each 25c, 3 for.....60c

Dianthus Arenarius (Sand Loving Pink). This pink delights in a sandy soil and sun. Flowers white with carmine ring on 5-inch stems. Deeply fringed and fragrant. Excellent for dry hot places. Each 20c, 3 for 50c, 7 for\$1.00

Dianthus Deltoides (Maiden Pink). One of the prettiest border pinks, making neat mats of foliage bearing thousands of bright crimson flowers during July and August. Very easily grown and satisfactory in the rockery. Height 5 inches. Each 20c, 3 for.....50c

Dianthus Speciosus (Lace Pink). Beautiful lacy flowers of a clear lavender-pink produced in great abundance. Wonderfully sweet scented. Easily grown and very attractive. A good cut flower. Height 12 inches.

Dianthus Barbatus (Sweet William). A biennial, but producing such a lavish display in the sunny garden that they are distinctly worth while. Give them a rich light soil for best results.

Pink Beauty. A clear pleasing pink of large size. A remarkable color. Strong field plants. Each 15c, 3 for 40c, 10 for \$1.00

Giant White. Extremely large florets and trusses of a clean pure white. Strong field plants. Each 15c, 3 for 40c, 10 for \$1.00



Delphinium

Delphinium Gold Medal Hybrids. A very sturdy strain that is excellent for garden planting or massing in groups. Colors range from purple to light blue. Our prices constitute a real bargain. Each 20c, 3 for 50c, 8 for\$1.00

Delphinium Wrexham Hollyhock Strain. The recognized superior strain of fine Delphinium. Grown from selected seed this shows a high percentage of choice doubles and extra large singles in varying shades and combinations of colors. Noted for its vigor and rugged habits, the perfectly formed spikes are held on erect stiff stems. Grand in the garden and superb as cut flowers. Each 25c, 3 for 60, 10 for.....\$1.75

Dreams of Beauty (Diener). Wonderful iridescent blooms from lightest sky blue to deepest gentian blue, with orchid, lavender, rose, and pink shadings. Strong upright spikes. 5 to 6 feet tall. Both single and double flowers. You cannot be without some of these. Our prices are only possible because of quantity production. One year clumps from field that bloomed last year. Each 25c, 3 for60c



Kansas City, Mo.

The plants I received from you last fall were the nicest I've ever bought at any price.

Mrs. H. B.



Wrexham Delphinium

**GOLD MEDAL PICTURE
COLLECTION**

The picture on the front cover is of a basket which won a gold medal. It was made up of the following cut flowers which we are offering as a collection.

- 8 Regal Lily
- 6 Delphinium Wrexham
- 3 Gypsophila Bristol Fairy

17 Strong Plants for

\$2.35

(A \$3.00 Value)

Festuca Glauca (Blue Fescue Grass). Much used for edging borders and for contrast with darker foliage. Grows in compact clumps making a delightful show because of the bright blue color of foliage. Height 8 to 10 inches. **Each 15c, 3 for 40c, 10 for.....\$1.00**

Funckia (Plaintain Lily). A family of plants much prized for their neat foliage effect and late summer flowers. Excellent plants for bordering walks or for the margins of lily pools. All will grow and bloom well in locations that receive no sunlight whatever. Ideal for edging between shrubbery and the lawn. Easily grown and hardy.

Caerulea Lanceolate. August blooming, blue flowers. Broad, shapely green leaves. **Each 25c, 3 for.....60c**

Lancifolia. Excellent plant for shade. Lilac-blue flowers in August and September. Exceptionally fine for edging. **Each 20c, 3 for50c**

Subcordata Grandiflora. Large white fragrant lily-like flowers in August. **Each 35c, 3 for90c**

Variegata. Beautiful edging plant with its green and yellow variegated foliage. Blue flowers in August. **Each 35c, 3 for.....90c**

Special Funckia Collection, 1 each of the 4 varieties, \$1.00 postpaid.

Gaillardia Standholder. A large flowering variety with rich golden-yellow flowers with large maroon center. **Each 20c, 3 for.....40c**

Gaillardia Tangerine. The Gaillardia is one of the indispensable flowers for the hardy garden. Tangerine is a new variety with large orange-colored flowers. Ideal for cutting. **Each 20c, 3 for50c**



Lewiston, Mont.

The flowers I got from you last fall were lovely and I am well pleased.

Mrs. F. M.

**Gypsophila
(Baby's Breath)**

Gypsophila Bodgeri. The new double dwarf Baby's Breath. Indispensable for cutting as it begins flowering two weeks before Bristol Fairy and is continuous thereafter until fall. The very double flowers open pure white changing to blush-pink as they age. Charming for garden display and very useful for cutting. The plants we offer are established and growing in pots and are absolutely guaranteed to be double. **Each 35c, 3 for.....90c**

Gypsophila Bristol Fairy. This glorious Baby's Breath continues to become more popular all the time. The strong growing plants are covered with a myriad of dainty double flowers from June to August. An unrivalled cut flower and adds a lacy appearance to the border. We are offering strong thrifty growing plants from pots that we will guarantee to be absolutely double. **Each 30c, 3 for75c**

Gypsophila Oldhamiana. The new autumn flowering Baby's Breath from Manchuria. It continues to bloom from late August until November or when cut down by frost. The little blossoms of daintiest pink suffusion are carried in close but graceful terminal panicles. Very valuable because it flowers later than any other type. Height 3 ft. Strong field plants. **Each 25c, 3 for 60c, 6 for.....\$1.00**

Gypsophila Pacifica. A new rose colored or pink hardy perennial Baby's Breath. Begins to flower in early August when the white variety has passed. An excellent variety for the garden and cutting. Height 3 feet. Strong roots. **Each 20c, 3 for 50c, 8 for \$1.00**

**ALL SEASON COLLECTION OF
BABY'S BREATH**

By planting this collection one may have Baby's Breath in constant bloom from June to November as each variety is at its best at a different season. A grand assortment for cutting.

- Bodgeri
- Bristol Fairy
- Pacifica
- Oldhamiana

One Each of the 4 Varieties

\$1.00

3 Each for

\$2.50

Hen and Chickens. Desirable and fascinating hardy succulent plants for the rock garden. Plants are hybrids grown from seed and will show many variations. A bargain. **Each 15c, 10 for\$1.00**

Helenium Riverton Gem. A tall growing plant useful for its bright colored flowers in autumn. The daisy-like flowers are old gold suffused with terra cotta. The 3-foot plants are completely covered with flowers in August and September. **Each 25c, 3 for.....60c**

Linum Perene (Blue Flax). Every morning brings a new shower of blue to you on slender graceful stems. Blue Flax is easily grown in full sunlight on light soil. Foliage feathery and of a pleasing blue shade. Height 18 inches. **Each 20c, 3 for 50c, 8 for.....\$1.00**

Physostegia Vivid. A valuable addition to the list of fall flowering perennials. A new dwarf variety much superior to the older sorts. Height about 18 inches forming a sturdy and compact plant producing a multitude of stems with rosy-crimson flowers. Last a long time when cut. **Each 25c, 3 for50c**

Pentstemon Grandiflorus. If you have never grown Penstemon Grandiflorus you are missing a real worth while plant. Easily the largest and best of the entire family. Beautiful large soft lavender flowers on strong stems 2 to 2½ feet tall. Excellent for cutting. Striking blue foliage. Must be grown in full sun. **Each 20c, 3 for 50c, 8 for.....\$1.00**



Pentstemon Grandiflorus

Pentstemon Ovatus. A grand strong growing Pentstemon from the Rocky Mountains. Long spikes of deep blue flowers changing to purple in early summer. A grand border plant and fine for cutting. Basal leaves dark glossy green and almost evergreen. Height 2 feet. **Each 25c, 3 for.....60c**

Platycodon (Japanese Balloon Flower). The large, bell-shaped flowers of rich blue glorify the perennial garden during July and August when a cool color is needed. Given a rich, sandy, well-drained soil in full sun the Platycodon is a very permanent plant. We have plants in our border that have been undisturbed for twelve years and have never failed to give an abundance of bloom each summer. Grows 2 to 3 feet tall. Splendid two-year-old roots that will make a good showing this summer. **Each 20c, 7 for\$1.00**

Pyrethrum Roseum (Painted Daisy). Perhaps one of the most popular perennials for border and cutting. Flowers of pink, red, and white, in May and June and again in the fall. Our collection consists of many good single and double types in a fine range of colors. In mixtures only. Extra strong plants. **Each 20c, 3 for 50c, 8 for.....\$1.00**

Pyrethrum (James Kelway). A new English strain of large flowering single red. Many unusual fine crimson shades with a center of deep gold. Extra long, strong stems make this variety fine for cutting. We offer strong blooming size plants. **Each 25c, 3 for 60c, 7 for\$1.00**

Ranunculus (Buttercup). This is also known as the Yellow Bachelor's Button. Very double glossy golden yellow flowers most of the summer on stems 18 inches high. Very free flowering. Excellent cut flower. **Each 20c, 3 for50c**

Rudbeckia Purpurea. The giant purple cone-flower is a splendid plant for the hardy border. Most attractive rosy-purple flowers with a large brown cone-shaped center. In bloom from July to September. Height 3 feet. **Each 20c, 3 for.....50c**



Council Bluffs, Iowa
Wish to thank you for the fine plants I received yesterday. In all my dealings with distant nurseries I have never received plants that looked as healthy and fresh. It is not going to be your fault if they don't grow.

Mrs. H. W. H.

Scabiosa New House Hybrids. This is the one perennial plant that is in continuous bloom from spring until killed by frost in fall. The wavy petaled flowers are born on long stems and come in many beautiful shades of blue and lilac. The ideal cut flower. Strong field plants. **Each 30c, 3 for.....75c**

Scabiosa Fischerii. New! The graceful plants two feet tall are literally alive with color during the entire summer. There seems to be an un-ending succession of sparkling lavender blue double flowers all summer. Grand for cutting. All in all one of the best new flowers produced in the past 10 years. Strong sure blooming field plants. **Each 30c, 3 for 75c, 10 for\$2.50**

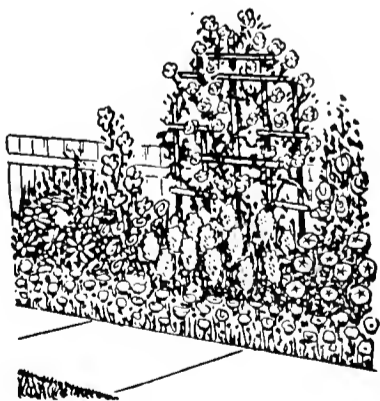
Sedums. From our very large collection of hardy Sedums we have selected what we consider the best varieties for rock gardening and general planting. We are offering these at this remarkable low price of 15c each. A collection of 10 outstanding varieties for**\$1.00**

Sedum Anopetalum Elegans. A terrible name, but none the less a very beautiful and outstanding Sedum. Silvery blue branching stems 4 to 5 inches tall. Like branchlets of the best blue spruce. Outstandingly good. **Each....25c**

Siberian Iris. We have found that this beautiful specie is much better if spring planted in the North. An ideal plant to put at the base of a bird bath, sun dial, about a lily pool, or in the perennial garden. The graceful tall grass-like foliage is attractive all season. Loves a moist soil in full sun. Flowers are grand for cutting.

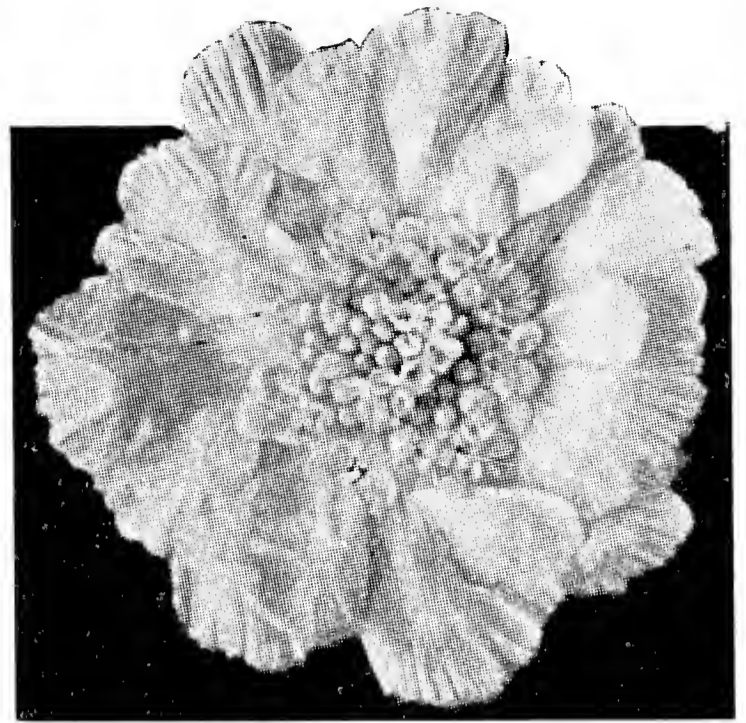
Emperior. A noble form with large flowers of a deep violet-blue of good texture. Height 3 feet. **Each.....25c**

Sunnybrook. A great favorite of a pleasing shade of Alice Blue. **Each.....25c**



ANOTHER SAVING

Minnesota has no sales tax law. We therefore pass this saving along to you. The prices quoted in this catalog include delivery to your door on all orders of \$2.00 or over.



Scabiosa House Hybrid

Shasta Daisies. The Shasta Daisies are a very valuable group of hardy perennials much prized for their long lasting cut flowers. They are easily grown, hardy, and fill a place in the border that only daisies could. Lift and divide plants every two years.

Elder Daisy. This is the true Memorial Day Daisy as it is usually in bloom on that day. Smaller flowers than the others but literally produced by the thousands. Very fine cut flower. **Each 20c, 3 for50c**

Supreme. A new Shasta Daisy that is the finest we have ever seen. It is unsurpassed in size, clearness of white, fullness of center, and substance of petalage. The immense pure glistening white daisies are produced on tall, strong, straight stems over the entire summer. Excellent landscape variety and ideal as a cut flower. We offer strong field grown plants that will bloom the entire summer. **Each 35c, 3 for.....\$1.00**

White Swan. A new early fully double Shasta Daisy. Begins to bloom in late May and continues all summer. It is so double that no center is visible. Excellent long stems. Fine for cutting. **Each 30c, 3 for.....75c**

Statis Latifolia (Sea Lavender). Evergreen tufts of thick leathery leaves from which spring the flowering shoots with sprays of thousands of small lavender colored flowers in July and August. The flowers can be cut and dried for winter use. A sandy soil in full sun is essential. A fine plant for either border or rockery. Plant in fall or spring 10 inches apart. Height 15 inches. **Each 20c, 3 for 50c**

Tritoma Tuckii (Red Hot Poker). This Tritoma has proven hardy in northern gardens when other varieties such as Pfitzeri and Perry's have winterkilled. The large spikes of orange-red flowers turning to yellow are produced on 3-foot stems in early June. **Each 30c, 3 for75c**

Varigated Ribbon Grass. A striking plant used for contrast. Foliage 18 inches tall growing in clumps and longitudinally striped with green, white, and cream. Very ornamental. Each 20c, 3 for50c



Veronica (Speedwell)

The veronicas are considered to be one of the best perennials for American borders. They are easily grown, perfectly hardy, last indefinitely, and give some wonderful cutting material.

Veronica Longifolia Subsessilis. A fine plant for the hardy border increasing in beauty year by year and giving loads of good cutting material. Blue flowers on the compact, tapering spikes from July to September. Height 2 ft. Each 25c, 3 for 60c, 6 for.....\$1.00

Veronica Royal Blue. A beautiful variety producing handsome spikes of rich gentian blue flowers during June and July. One of the prettiest and brightest. Height 1 foot. Each 25c, 3 for 60c, 6 for.....\$1.00

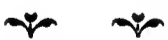
Prostrata. A prostrate plant with stems rooting as they grow. Blue flowers in June. Good plant for the rockery. Each 20c, 3 for.....50c

Satueroides. A good, low creeping variety useful in the rockery or planting between flagstone walks. Blue flowers on short stems 2 to 4 inches long. Each 20c, 3 for.....50c

Violas. If there is a group of plants that are better suited for bedding purposes than the Viola then we are not familiar with them. They are very free flowering, easy to manage, and bloom for a period of six months if given a good rich soil and water during dry weather.

Jersey Gem. The ever popular beauty. Large pure rich violet blue flowers in abundance. Each 20c, 3 for 40c, 10 for\$1.25

Sweet Violet Rosina. This new pink violet blooms throughout spring and summer and with the approach of the cool fall days seems to burst into blossom with multitudes of those deliciously fragrant rosy-pink violets. This violet seems to thrive as well in full sun as in shade. A grand plant for carpeting under shrubs. Strong field plants. Each 25c, 3 for 60c, 10 for\$1.60



Oakfield, Wis.

I had an order of plants from you last year and they were splendid. I was very well pleased.

Mrs. G. A. S.

Hardy September Flowering Mums

We are offering a selection of the earliest possible flowering Chrysanthemums. Masses of bloom may be had from early September until stopped by frost. All are fully double and the colors are sparkling and bright.

Amelia. A sensation wherever grown. The 15-inch green mounds are completely covered with double deep pink flowers from late August to freezing. Each 25c, 3 for.....60c

Early Bronze. A fine hardy pompom. Color a bright orange-bronze. In full glory September 15th, and remains in fine condition until severe frost. Height 20 inches. Each 25c, 3 for50c

Lorelei. A very productive early double yellow noted for its fine form and rich golden yellow flowers which are 3 inches across. An outstandingly superior variety. Each 25c, 3 for50c

September Queen. Begins flowering late in August but in September is a profusion of pure white double flowers. 3½ inches in diameter. Very useful for cutting purposes. Height 20 inches. Each 25, 3 for.....50c

Tasiva. A wealth of bloom on excellent straight stems of the purest white. In freedom of flowering this variety is surpassed by no other double white. Height 2 ft. Each 25c, 3 for60c

Yellow Normandie. A bronze-yellow that is in full bloom September 10th. A beautiful color and very desirable plant. One of our special favorites. Each 25c, 3 for.....50c

EARLIEST OF ALL MUM COLLECTION

Amelia
Early Bronze
Lorelei
September Queen
Tasiva
Yellow Normandie

One Strong Growing Plant of Each
for

\$1.00

Oriental Poppies

Without question the most dazzling and showy of all hardy perennials in point of color and size. The Oriental Poppies bring the gorgeous and brilliant colors of the Far East silks to our gardens. The reason so many people fail to succeed with the Oriental Poppy is because they do not understand the simple requirements of the plant, which is almost the reverse of most plants. The roots should only be transplanted during the dormant season which is during July, August, and September. The plant makes a

leafy growth during the cool fall months which is very necessary. This growth is evergreen and in spring the flowering stems appear and after blooming the top apparently dies which is the natural rest period of the plant. The dormant season is the only period at which field grown plants can be moved. They do well in any ordinary soil and increase in size and number of blooms from year to year. Cover lightly with evergreen boughs or light hay for first winter after planting.

Poppy Plants Are Shipped During July, August, and September Only.



Orange Beauty. Flowers very large and of a beautiful orange shaded scarlet with a large purple blotch at the base of the petals. Very free flowering. **Each 25c, 3 for.....60c**

Lula A. Neeley. Not the largest but certainly one of the finest poppies in existence. Strong straight stems hold the medium sized flowers erect. Color a striking even ox-blood red. Very free flowering. **Each.....50c**

Mrs. Perry. The standard and perhaps the best all around pink poppy. Very large salmon-rose flowers with dark center. Very free blooming. Should be in every garden. **Each 35c, 3 for90c**

Olympia. Beautiful flame scarlet flowers overlaid with golden salmon. The only double variety and hence in great demand. The earliest of all to bloom. Height 24-30 inches. The super-hardy double ruffled poppy. **Each 25c, 3 for 60c, 10 for.....\$1.50**

Wurtembergia. An enormous flower of a brilliant glowing scarlet. Often produces flowers the size of a dinner plate. Large petals of heavy substance. An outstanding variety by which all others are judged. **Each.....60c**



East Cleveland, Ohio

It is a revelation to find anybody in the plant business as honest as you are. It certainly makes the customer feel good when he is doing business with you. I'm sure if I had ordered poppies from some one else they would have been shipped to me whether it was late or not. Your frankness is refreshing.

R. M. T.



Oriental Poppy

SPECIAL COLLECTION OFFER

Lula A. Neeley Olympia
Mrs. Perry Orange Beauty
Wurtembergia

One Strong 2-year Field Plant of Each
for

\$1.75

All guaranteed to bloom first year
July, August and September delivery
only.

Native Wild Flowers

We are listing the Native Wild Flowers that do well if planted in the spring. Many of the native plants start blooming so early in the spring that it is impossible to transplant them at that time. Our fall list will contain many more favorites such as Bloodroot, Jack-

in-the-Pulpit, Dutchman's Breeches, Trillium and many others. All of these should be planted in the fall for best results. All orders for Wild Flowers received after April 15th will be booked for fall delivery.



Bellwort. The fragrant Bellworts are always admired with their bright golden-yellow drooping bells in early May. **Each 15c, 3 for 40c, 10 for\$1.00**

Columbine. A native Columbine growing on dry rocky ledges in partial shade. Produces many scarlet and yellow flowers in May and June. One of our finest native plants. An excellent garden plant. **Each 20c, 3 for 50c, 10 for\$1.40**

Gentian (Closed). A most interesting flower blooming in September in rich moist soil. Derives its name from the terminal clusters of flowers that resemble bottles. Blooming size plants. **Each 25c, 3 for.....60c**

Hepatica. The most charming of our native wild flowers. Often begins blooming before the snow leaves. The color varies from white to pink and from lavender to purple. It is of the easiest possible culture. Grows 8 inches tall. **Each 15c, 3 for 40c, 10 for.....\$1.25**

Jack-in-the-Pulpit. Interesting in the wild garden and of the easiest culture. The spathe is light green and striped with brown. Blooms in April and May. Large pods of bright red berries remain after the leaves die. Does well in moist dense shade. **Each 15c, 3 for 40c, 8 for\$1.00**

Maidenhair Fern. The most graceful of all hardy ferns. Does well in moist shaded spots. **Each 15c, 3 for40c**

Mertensia (Bluebells). Drooping clusters of pink buds changing to beautiful blue flowers in May. Perhaps the bluest and daintiest of all spring blooming flowers. Does well in ordinary moist soil in partial shade. Fine planted under trees. Plant tubers 2 inches deep. Height 12 inches. **Each 15c, 3 for 40c, 10 for\$1.25**

Viola Pedata (Birds Foot Violet). A violet fond of sandy well drained soil and full sun. Produces many pansy-like flowers in shades of lavender and purple. Ideal for massing in sunny rock garden. **Each 20c, 3 for 50c, 7 for\$1.00**

Phlox Divaricata. Our native lavender-blue wood phlox. A showy, easily grown, free flowering native for the rock garden or semi-shaded border. Trailing dark green glossy foliage covered in May and June with multitude of fragrant lavender flowers. A nice plant to use with darwin tulips. Height 12 inches. **Each 15c, 3 for 40c, 8 for.....\$1.00**

Violet. Our native woodland violet. A tuft of large heart-shaped leaves from which many long stemmed purple flowers appear in spring. A grand plant for edging borders. A few plants will produce bunches of delightful cut flowers for the house in very early spring. Large clumps. **Each 15c, 3 for40c**

SPECIAL WILD FLOWER COLLECTION

If you are a lover of wild flowers do not pass up this sensational bargain. Every home has a shaded corner that is hard to manage. Plant it to these harbingers of spring and enjoy their beauty for years. All plants offered are heavy blooming size that will bloom profusely in your garden.

- 3 Mertensia
- 3 Hepatica
- 3 Closed Gentian
- 3 Bellwort
- 3 Phlox Divaricata
- 3 Maidenhair Fern
- 3 Jack-in-the-Pulpit
- 3 Columbine
- 3 Woodland Violet

27 Plants for

\$2.75

Postpaid

Hardy Ferns

Our Hardy Ferns have so many uses that they are really indispensable to all good gardens. They are becoming very popular—to fill in those places where the ordinary shrubs and flowers will not thrive. The cool north exposure of the home or other buildings is an ideal place for a fern bed. They make an ideal background for other flowers. The

fronds can also be cut to use in the house with other cutflowers.

Any ordinary good garden soil with a liberal application of leaf mold or peat spaded in will grow good ferns. With just a minimum of care a fernery will increase in beauty each season and last many years.



Evergreen Fern. An evergreen species with deep green divided fronds. Does well in deep shade. Each 30c, 3 for75c

Interrupted Fern. Much used for foundation planting and in the large rockery. Will tolerate a sunny location, but at its best in shade. Large arching fronds of velvety green. Height 2 to 3 feet. Each 35c, 3 for.....90c

Lady Fern. A large handsome fern two to three feet tall with finely cut foliage. One of the best for general culture. Each 30c, 3 for75c

Leathery Wood Fern. A medium sized graceful fern for many uses. Does well in dry shade. Height 15 to 20 inches. Each 30c, 3 for75c

Maidenhair Fern. The most graceful of all hardy ferns. Does well in moist shaded spots. Each 15c, 3 for 40c, 8 for.....\$1.00

Ostrich Fern. One of the most stately ferns often growing 3 to 4 feet tall. Does well in any shaded moist location. Each 35c, 3 for\$1.00

One Each of the Six Ferns for

\$1.50

**FOUNDATION PLANTING
FERN COLLECTION**

Evergreen
Interrupted
Leathery
Maidenhair
Lady
Ostrich

3 Strong Plants of Each for

\$3.00

Postpaid
(\$4.40 Value)

Our ferns are large heavy established clumps and require about double the amount of postage that other average plants would. We will prepay all fern orders over \$3.00. On smaller orders kindly add 5c per plant for postage.

HOW TO ORDER

We appreciate all orders. No order too large and none too small. We are thankful for all of them. Remittance may be made by registered letter for cash, stamps, postal or express money order or personal check. When sending check kindly add 5c for exchange fee.

OUR PRICES

Our prices are lower not because of cheapened quality, but because we eliminate costly catalogs, advertising and general overhead expenses. Give us a trial order and if you do not think the plants are as represented return them at our expense and your money will be cheerfully refunded.

ANOTHER SAVING

We prepay the transportation charges on all orders of \$2.00 or over. Over a period of years our average transportation charges has been 10%. We prepay charges—this saving is yours. When you order from us you know exactly what your plants will cost you delivered to your door.

THE LEHMAN GARDENS
FARIBAULT, MINNESOTA

Check This List

of.. **MONEY!
SAVERS!**

10 Hardy Perennials

An unusual offering of fine thrifty plants. Stock up at these prices. No two plants alike. 10 for

\$1.00

20 Baby Columbine

These are one year plants. Should bloom this year. From the world's best strains and colors.

\$1.00

10 Phlox Subulata

All different blooming size plants from our Worlds Largest collection.

\$1.15

8 Glorious Mums

Our selection of colors. A tremendous bargain.

\$1.25

8 Hardy Phlox

All field grown and all different. A grand assortment. Our selection

\$1.00

100 Blooming Size Glads

Of the top notch varieties. All colors. All Beauties. A whole summer of Glads for

\$1.00

25 Tenuifolium Lilies

These are one-year-old bulbs. All will begin to bloom this season and make grand bulbs for a glorious show next year.

\$1.00

10 Rock Garden Sedums

All different. A fine collection unlabelled.

\$1.00

7 Peach Leaf Bellflowers

The biggest value of the year. All field grown plants.

\$1.00

10 Elegans Lily

Those brilliant cup-shaped scarlet flowers in June.

\$1.00

5 Finest Hardy Asters

All different. Our selection of varieties. A big value.

\$1.00

7 Pentstemon Grandiflorus

Those lovely lavender bells. Strong, sure blooming plants.

\$1.00

8 Siberian Columbine

That columbine in dark blue to purple. Hardy as an oak.

\$1.00

4 Outstanding Perennials

One each of Aster Constance, Bodgeri Baby's Breath, Bellflower Telham Beauty, and Pentstemon Grandiflorus. One strong plant of each

\$1.00